

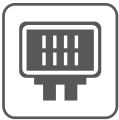


PNG-150M(210)

490-510 Watt

1/3-CELL MBB MONO PERC

Key Features



IP68 junction box, connector

IP68 junction box and connector have a high degree of waterproof, effectively resist the harsh environment;



PID Resistant

Excellent PID resistance at 96 hours (85°C/85%) test, and also can be improved to meet higher standards for the particularly harsh environment;



MBB half-cut cell technology

New circuit design, lower internal current, lower Rs loss



Significantly lower the risk of hot spot

Special circuit design with much lower hot spot temperature

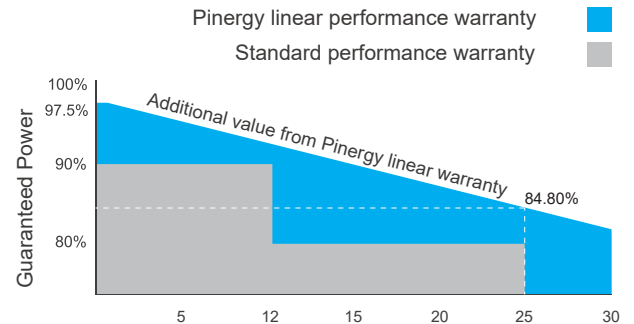


Lower LCOE

2% more power generation, lower LCOE

Linear Performance Warranty

12 Years Product Warranty · 30 Years Linear Power Warranty



Certifications

- IEC 61215, IEC 61730, CE, CQC
- ISO9001: 2015: Quality management system
- ISO14001: 2015: Environmental management system
- ISO45001: 2018: Occupational health and safety management system



Electrical Specifications

Module Type	PNG150M-490		PNG150M-495		PNG150M-500		PNG150M-505		PNG150M-510	
	STC	NOCT	STC	NOCT	STC	NOCT	STC	NOCT	STC	NOCT
Max. Power (Pmax/W)	490	361	495	365	500	369	505	372	510	376
Voltage at Max. Power (Vmp/V)	42.5	39.7	42.7	39.9	42.9	40.1	43.1	40.2	43.3	40.4
Current at Max. Power (Imp/A)	11.53	9.09	11.59	9.15	11.66	9.20	11.72	9.25	11.78	9.31
Open circuit voltage (Voc/V)	51.2	47.8	51.4	48.0	51.6	48.2	51.8	48.3	52.0	48.5
Short circuit current (Isc/A)	12.17	9.79	12.24	9.85	12.31	9.91	12.38	9.96	12.45	10.03
Module efficiency (%)	20.12%		20.33%		20.53%		20.74%		20.94%	
Power Tolerance (W)	0~+5									

Standard Test Condition (STC): Irradiance 1000W/m², Cell Temperature 25°C, AM1.5

Nominal Module Operating Temperature (NOCT): Irradiance 800W/m², Ambient Temperature 20°C, AM1.5, Wind Speed 1m/s

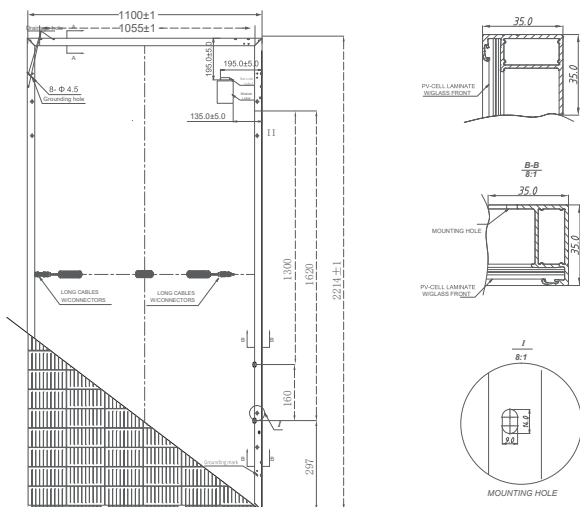
Mechanical Specifications

Cell Type	10BB MONO 210×210mm
No. of Cells	150 (5×30)
Dimension	2214x1100x35mm
Weight	28kg
Glass	3.2mm, Low Iron Tempered Glass
Frame	Anodized Aluminium Alloy
Junction Box	IP68, 3 diodes
Output Cables	4mm ² , Length 300mm or customized
Connector type	MC4 compatible

Packaging Configurations

Per Pallet	31 pcs
Per 40' HQ Container	620 pcs

Engineering Drawings



Temperature Characteristics

NOCT Temperature	44°C ±2°C
Temperature Coefficient (Pmax)	-0.36%/°C
Temperature Coefficient (Voc)	-0.28%/°C
Temperature Coefficient (Isc)	0.05%/°C

Maximum Ratings

Maximum system voltage (IEC)	1500V DC
Snow / Wind	5400Pa / 2400Pa
Operating Temperature	-40°C ~ +85°C
Maximum series fuse rating	25A

Curve & Temperature Dependence

